

ESG HIGHLIGHTS

LTIFR (excluding fatalities), per million hours



Read more on [page 61](#)

EVRAZ GHG Scope 1 and 2 emissions, MtCO₂e



Read more on [page 62](#)

Social and community matters

EVRAZ strives to adhere to international corporate social responsibility principles by making a meaningful contribution to local economies and supporting communities wherever it operates. Everywhere the Group operates, it seeks to build sustainable, positive partnerships with local governments and non-government organisations, as well as with business, media and other partners.

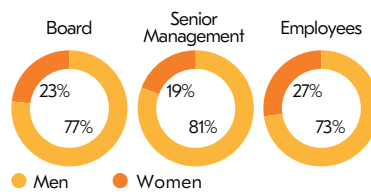
Read more on [pages 74–75](#)

Freshwater intake for production needs, m m³



Read more on [page 69](#)

Diversity, % (number of people)



Read more on [page 71](#)

Governance
Read more on [pages 104–125](#)

Environmental matters
Read more on [pages 67–70](#)

Health and safety
Read more on [page 61](#)

Our people
Read more on [pages 71–73](#)



OUR APPROACH TO SUSTAINABILITY

EVRAZ understands the responsibility inherent in its position as one of the world's leading steelmakers and, as such, is committed to integrating sustainable development principles and values into its daily operations. The Group believes that sustainable development will help it to maintain the long-term stability of its business, retain a competitive market position and create value for its stakeholders.

EVRAZ' sustainable development initiatives adhere to the OECD's Guidelines for Multinational Enterprises to apply a consistent approach and adopt best practices across its global operations.

The Group bases these commitments on the best international standards and practices, fully endorsing the United Nations Universal Declaration of Human Rights provisions and respecting people's civil, political, economic, social and cultural rights.